



# Euxton Church of England Primary School



Bank Lane, Wigan Road, Euxton, Chorley, Lancashire, PR7 6JW

☎ (01257) 263454

website: [www.euxtonceprimary.co.uk](http://www.euxtonceprimary.co.uk) e-mail: [head@euxton.lancs.sch.uk](mailto:head@euxton.lancs.sch.uk)

Headteacher: Mrs Mairi Ash

## **Attendance**

At Euxton C of E Primary School we place great importance on good attendance and punctuality.

We know that a child's attendance has a direct impact on their learning. Those children who are regularly absent from school and regularly late do not achieve their potential and do fall behind in class. Research has proven that there is a high correlation between school attendance and academic performance and success.

Please support the school in this by ensuring that your child attends school regularly and arrives ready to learn and on time. Our attendance target is **96%**.

## **Lost Learning due to Poor Attendance**

Frequent absence can add up to a considerable amount of lost learning and can seriously disadvantage your child in adult life.

## **What can parents/carers do to help?**

- Parents/carers must model the value of education, including the importance of regular attendance.
- Make sure that your child goes to school regularly and arrives on time - you will establish a good habit that they will carry through life.
- If your child starts missing school, work with the school to put things right. Make sure your child understands that you do not approve of him/her missing school.
- If your child is ill or must miss school for some other reason, contact the school office as soon as possible.
- Do not expect school to approve of shopping trips, birthday, treats etc. during school hours. Arrange family holidays so that your child will not miss any learning.
- Take an interest in your child's school work and be involved in the school as much as possible - your child will value school more if you do.

## [Types of Absence](#)

Every half-day absence from school, by law, has to be classified as either **authorised** or **unauthorised**. This is why information about the cause of absence is always asked for.

See the [School Performance Comparison website](#) for information on our school's absence figures. As you can see we perform higher than other schools in the local area and nationally. Please help us continue with this.

## [Authorised Absences](#)

These are mornings or afternoons away from school for a valid reason such as illness, emergency medical or dental appointments (routine appointments should always be made out of school hours) and emergencies.

## [Unauthorised Absences](#)

An absence is classified as Unauthorised if the reason was not recognised as acceptable. The Department for Education (DfE) and Local Education Authorities provide information for schools as to what is acceptable and what is not.

Examples of reasons that would **not** be accepted:

- A birthday
- A shopping trip
- Day trips
- Holidays – unless have been agreed as exceptional circumstances

We appreciate the challenges that some parents/carers face when booking holidays, particularly during the school holidays. However, regular attendance at school is vital in helping children and young people to achieve their full potential and get the best possible start in life.

## [Attendance Monitoring](#)

As attendance and punctuality is so important to us, we cannot be complacent where there are instances of unacceptable, low pupil attendance, or if pupils are regularly late to school. We do monitor this and will be in contact if attendance is below **91%**.

## [Leave in Term Time](#)

Requests for leave can only be granted in exceptional circumstances. Requests for leave must also be made to the school in advance. To do this please come into the school office to fill out an application form.

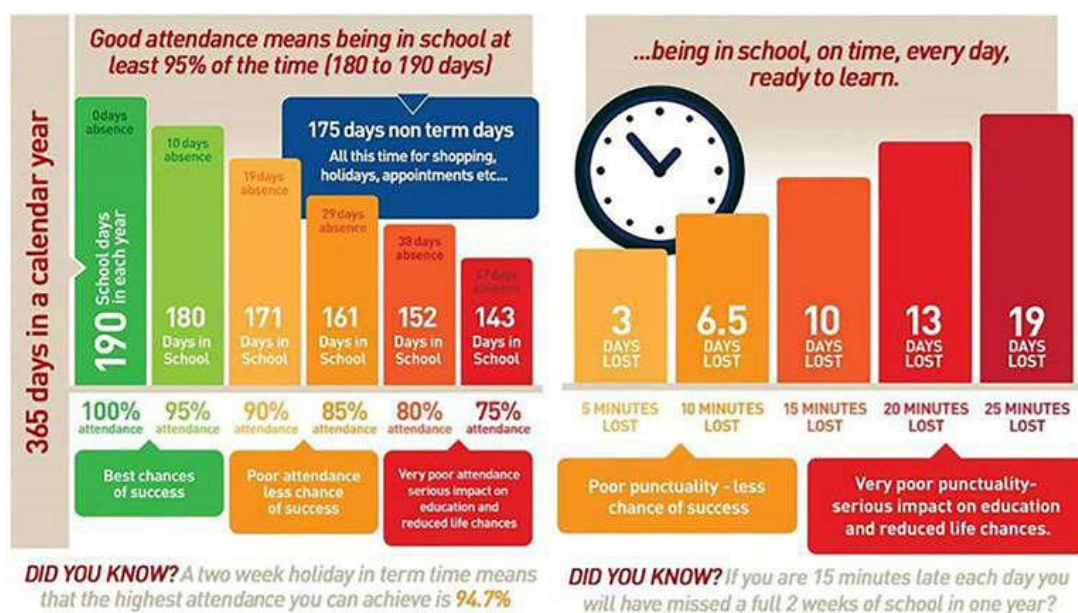
## Punctuality

It is very important that all children arrive on time. The school gates open at 8.45am every morning. School starts at 8:55am. If your child arrives after 8.55am then they are late.

If children are regularly late, a parent/carer will be expected to be contacted to look at how punctuality can be improved.

## ATTENDANCE MATTERS

What do your attendance figures actually mean?



In our Christian family, we all SHINE in the light of Jesus.

Wisdom Compassion Humility Friendship Peace Trust Forgiveness Hope